

# AMISTAD COMMUNITY HEALTH CENTER CORPUS CHRISTI, TEXAS PUBLIC RESTROOM RENOVATIONS



**PROJECT LOCATION MAP - CORPUS CHRISTI, TX.**

## DESIGN TEAM



**engineers | architects | surveyors**

801 NAVIGATION, SUITE 300  
CORPUS CHRISTI, TEXAS 78408  
TBPE FIRM NO. F-366

PH. (361) 883-1984  
FAX. (361) 883-1986  
WWW.LNVINC.COM

Mechanical and  
Electrical Consultants  
Firm Registration # F-02829

5440 Old Brownville Rd.  
Corpus Christi, TX 78417  
361 852 2342 vox  
361 852 2343 fax



**JUNE 2016**

### DRAWING LEGEND:

T-1 COVER SHEET

#### ARCHITECTURAL:

A-1 FLOOR PLANS AND GENERAL NOTES

A-2 SCHEDULES, DETAILS, INTERIOR ELEVATIONS

#### MECHANICAL:

M-1 HVAC DEMOLITION PLAN AND FLOOR PLAN

M-2 HVAC GENERAL NOTES AND SCHEDULES

M-3 HVAC SPECIFICATIONS

M-4 HVAC SPECIFICATIONS

#### PLUMBING:

P-1 PLUMBING DEMOLITION PLAN AND FLOOR PLAN

P-2 PLUMBING DETAILS AND SCHEDULES

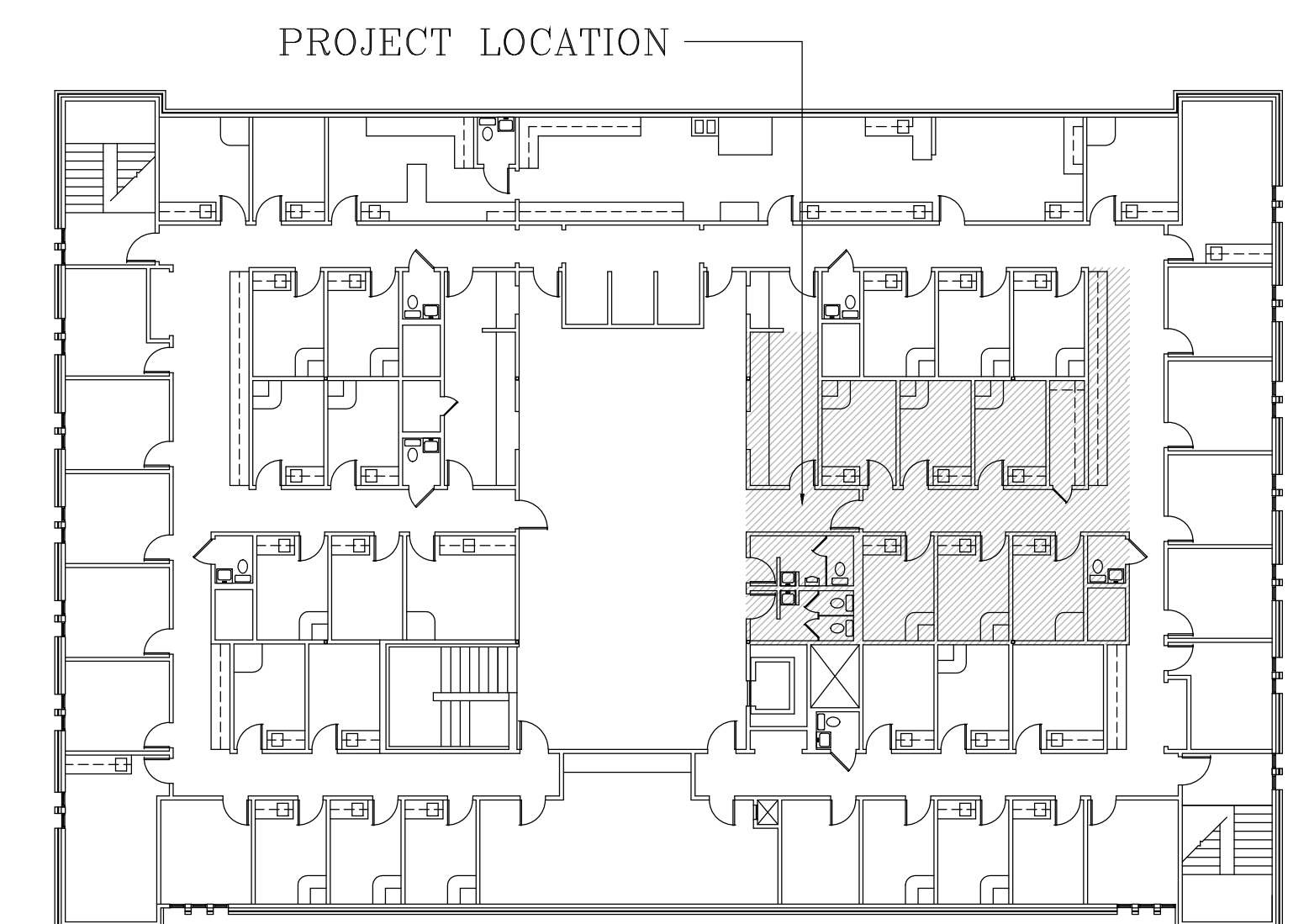
P-3 PLUMBING SPECIFICATIONS

#### ELECTRICAL:

E-1 ELECTRICAL DEMOLITION PLAN AND FLOOR PLAN

E-2 ELECTRICAL SPECIFICATIONS

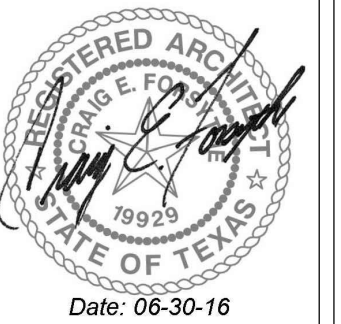
### LOCATION MAP - SECOND FLOOR



**KEY PLAN**  
NOT TO SCALE

SECOND FLOOR

THIS IS TO GIVE NOTICE AND CERTIFY THAT THE TEXAS BOARD OF ARCHITECTURAL EXAMINERS (TBPE) HAS JURISDICTION OVER THE PROFESSIONAL PRACTICE OF ARCHITECTURE. FOR QUESTIONS CONCERNING THE PROFESSIONAL PRACTICE OF ARCHITECTURE IN THE STATE OF TEXAS, CONTACT THE TBPE AT 810-386-6900. WWW.TBPE.GOV OR WRITE TO THE TEXAS BOARD OF ARCHITECTURAL EXAMINERS, P.O. BOX 12337, AUSTIN, TEXAS 78711-2337



ISSUES / REVISIONS	NO.	DATE	DESCRIPTION	BY

**AMISTAD COMMUNITY HEALTH CENTER  
CORPUS CHRISTI, TEXAS  
ELEVATOR AND SECOND FLOOR  
RESTROOM RENOVATIONS**

TBPE FIRM NO. F-366  
TBPE FIRM NO. 10726501  
**engineers | architects | surveyors**  
CORPUS CHRISTI, TEXAS 78408  
FAX (361) 883-1986  
WWW.LNVINC.COM



DRAWING NO.  
**T-1**  
of 1  
DRAWN BY: CEF  
CHECKED BY: CEF  
APPROVED BY: CEF  
JOB NO: 140150